

# Optimize your data center for the digital future



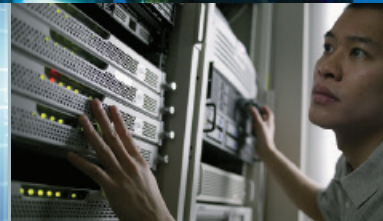
Medium and large enterprise



Colocation / MTDC



Hyperscale / cloud computing



Edge computing

## Always-on, efficient and ahead of the curve

With the rise of big data, edge computing and the cloud, data centers are under pressure to be more high-performing, sustainable and cost-effective than ever, without compromising resilience or security. At the same time, new opportunities and revenue streams require faster speed-to-market.

With our digital intelligence, world-class cybersecure products and services, reliable and compatible solutions and engineering expertise, we help data centers realize real business benefits today while optimizing their operations for the future.



## Components for electrical and mechanical subsystems



### Variable frequency drives (VFDs)

- Designed to significantly reduce energy consumption and increase cost savings for HVAC applications
- Industry leading energy efficiency algorithm, high short-circuit current rating and robust design, offering customers increased efficiency, safety and reliability



### Medium- and low-voltage circuit breakers

- Power Defense molded case circuit breakers (MCCB)
- Magnum circuit breakers
- Power Xpert® Release (PXR) trip units with communications
- Industrial breakers and air circuit breakers (ACB)
- ANSI and IEC configurations



### Fuses

- Finger-safe CUBEFuse® and compact circuit protector (CCP) reduces footprint up to 70%
- Low-profile CCP offers more than 10 times the interrupting rating for rack PDUs
- High-speed square body and cylindrical bolt-on fuses for UPSs

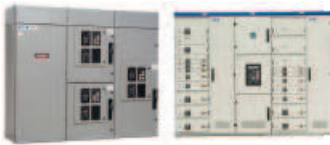
## Turnkey power containers



### Integrated power solutions for quick deployment

- Standard and customized modular data center solutions
- Modular integrated transportable substation (MITS)
- Integrated power assembly (IPA)

## Power distribution



### Medium- and low-voltage motor control centers

- Medium-voltage motor control centers
- Low-voltage motor control centers
- ANSI/NEMA and IEC certified



### Panelboards, switchboards and safety switches

- AC and DC panelboards, fusible and drawout
- AC switchboards, drawout and reverse feed
- Fusible coordination panelboard for easy selective coordination and arc flash mitigation
- Pow-R-Line Xpert units with MCCBs
- Non-loadbreak Pringle® bolted pressure contact switches



### Medium- and low-voltage switchgear

- Generator and line-mounted switchgear
- Arc Quenching low-voltage switchgear
- Metal-clad and gas-insulated medium-voltage switchgear to 38 kV
- Metal-enclosed low-voltage switchgear to 575 V, 6000 A
- ANSI/NEMA and IEC certified



### White space power distribution

- System bypass module
- Power distribution unit (PDU) and remote power panel (RPP)
- Static transfer switch (STS)



### Transformers

- Dry-type, liquid-filled and unit substation transformers



### Rackmount power distribution units

- Advanced, monitored and managed
- Floor-standing, wall-mount and 0U/1U rackmount
- Universal input UPDU models with global approvals for worldwide deployment



### Busway

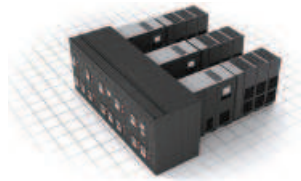
- Low- and medium-voltage busway up to 5000 A
- Plug-in, feeder and track configurations
- Built to fit special layout needs and shipped ready for installation

## Power quality, conditioning, backup and storage



### Power factor correction (PFC)

- Fixed and switched capacitor banks
- Both low-voltage (LV) and medium-voltage (MV) banks available
- Harmonic correction units (HCUs) can mitigate harmful harmonic currents



### Prefabricated power solutions

- Integrated UPS, switchgear and battery configured solutions for quick deployment and lower total cost of ownership
- Connected, centralized (skid) and contained (container) models
- Based on proven, preconfigured, repeatable designs that are system-tested



### Automatic transfer switches

- Amperage ratings up to 5000A
- Bypass isolation option
- Open and closed transition
- UL 1008 Listed
- Integral overcurrent protection option



### Uninterruptible power supply (UPS)

- Desktop, network, server and storage UPS up to 60 kW
- Data center and facility UPS up to 1200 kVA
- Energy storage options include batteries (Lithium-ion and lead-acid), ultra capacitors and flywheel
- EnergyAware UPS provides a distributed energy resource (DER) for grid operators

## Racks, enclosures and cages



### Surge protective devices (PSPD)

- Most reliable and advanced UL® 1449 4th Edition certified surge protectors
- Combine surge suppression components and EMI/RFI filtering



### Racks

- Two- and four-post open racks
- Ideal for voice, data and video (VDV) equipment
- Seismic configurations



### Enclosures

- Floor-standing and wall-mount models
- Seamless integration of cable management accessories and power
- Controlled thermal management options
- Preconfigured, tested and validated OCP ORV3 solutions



### Cages

- Secure data center segmentation in colocation or multi-tenant data centers
- Modular and reconfigurable to scale to future requirements

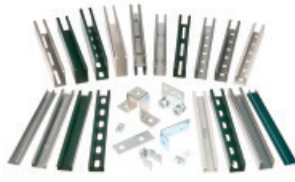
## Microgrids



### Microgrid solutions

- Power Xpert Microgrid Controller for maintaining overall system stability
- Site-specific microgrid system studies
- Cybersecurity features

## Structural support systems



### Strut systems

- Solid, slotted and long hole channel
- Fittings, clamps and beam supports
- Pre-galvanized, hot dip, stainless steel and Dura Green™ painted

## Cables and patch panels



### Copper and fiber solutions

- Copper network cables and patch panels
- Fiber network cables and patch panels
- Bulk cabling
- Robotic fiber panel systems

## KVMs



### KVM switches and console servers

- Rack, console and desktop KVMs
- Secure KVMs
- Console servers with or without cellular network access

## Wire and cable management



### Cable tray

- Two-sided rail systems, metallic, nonmetallic and Redi-Rail™
- Flextray™ cable support systems
- Cable runways and NEMA wireways



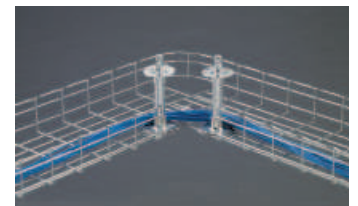
### Modular wiring systems

- Cables, cords, splitters, power fittings and switch drops



### Data center wiring devices

- Devices designed specifically for data centers
- Help to conserve power and reduce energy costs
- Available in multiple voltage configurations



### Cable management

- Flextray wire basket is easily cut/bent for flexibility on job site
- KwikSplice™ lightweight aluminum cable tray saves up to 50% on material and installation time
- Redi-Rail™ cable runway optimizes rung placement for precise cable dropouts

## Cooling, airflow and thermal management solutions



### Server rack cooling

- IT-grade cooling solutions to optimize efficiency
- Portable, in-row and rack-mounted AC systems
- Remote network management options
- Cooling fans



### Rack containment

- Contain and direct heat exhaust out of the enclosure's top rear
- Adjustable for plenum ceilings and high air returns
- Integrates seamlessly with existing cooling infrastructure



### Aisle containment

- Aisle ceilings
- End of row doors
- Overhead vertical wall systems



### Room containment

- Computer room air conditioning (CRAC) collars
- Sealed raised floor cable grommets

## Design, build, planning and support services



### Professional and consultative services

- Dedicated, experienced project management teams
- Application design, build and planning solutions including multi-vendor and life extension
- Power audits
- Efficiency and safety upgrades, start-up and site commissioning
- Short-circuit coordination and harmonic studies



### Preventive maintenance

- On-site service and extended warranties
- Arc flash hazard analysis
- Computational fluid dynamics offers 3D model of data centers, individual rooms, row and/or rack services
- Battery management and monitoring services
- Load bank testing, power quality metering and infrared scanning



### Emergency services

- Nearly 1,800 field and engineering service professionals globally
- Service professionals trained on multi-vendor distribution products
- Pre-crisis and disaster recovery and 24x7 service
- Regional manufacturing facilities enable rapid support and delivery for critical needs

## Cybersecurity services



### Cybersecurity services

- Assist customers to create a robust and holistic operational technology cybersecurity program
- Initial audits, comprehensive analysis and life cycle management

## Facility metering, power monitoring and management



### Power and energy meters

- Improve uptime and protect digital infrastructure with power quality event monitoring, easy root cause analysis, and accurate, real-time system values.
- Power and energy meters, single and multi-space unit enclosed meters



### Integrated Facility Systems™ (IFS)

- Integrates separate electrical distribution and control equipment into a single space-saving, factory-assembled connected package

## Monitoring consoles



### Network operations center (NOC) consoles

- Sit-to-stand applications for mission-critical monitoring environments
- Flat-panel display monitor arrays for ergonomic viewing

## EV charging



### EVCI (Electric vehicle charging infrastructure)

- Vehicle charging stations
- Power distribution equipment and energy storage
- Digital solutions for remote management

## Brightlayer software suites



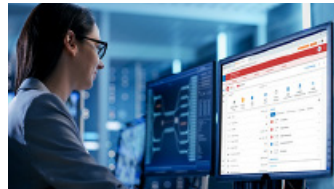
### Data Center Performance Management software

- Monitor power usage, track asset lifecycle and reduce costs with real-time data and automated alerts
- Maximize uptime and optimize operations with visualization tools, automated reports and dashboards
- Improve efficiency, productivity, data accuracy, decision-making and cost savings with software integration



### Electrical Power Monitoring System software

- Monitor your electrical system, store data, analyze historical data and identify outliers for proactive issue resolution
- Speed analysis, prevent recurrence, and unify complex workflows and systems with power quality analysis and high-resolution data
- Gain clarity and insight into energy usage, reduce penalty charges, decrease consumption and meet sustainability goals



### PredictPulse™ remote monitoring service

- Eaton power experts monitor compatible Eaton UPSs and PDUs around-the-clock, automatically dispatching field service technicians when needed
- Helps you detect power failures before they happen so you can mitigate downtime
- Provides monthly reports that track component age to help prevent downtime
- Expedited response and repair from Eaton field technicians 24/7; remote diagnostics enables them to have the correct parts when they arrive

Brisk Worldwide  
303 Lombrano St.  
San Antonio, TX 78201  
United States  
[www.briskworldwide.com](http://www.briskworldwide.com)

Brisk Worldwide  
All Rights Reserved  
Printed in USA  
Publication No. SA083023EN / 23-06-113 / GG  
December 2023

For more information, visit [BriskWorldwide/datacenters](https://www.briskworldwide.com/datacenters)  
or call **210-548-5623**

Brisk Worldwide is a registered trademark.  
All other trademarks are property of their respective owners.

Follow us on social media to get the latest product and support information.

